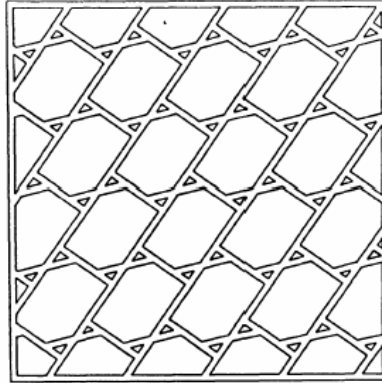
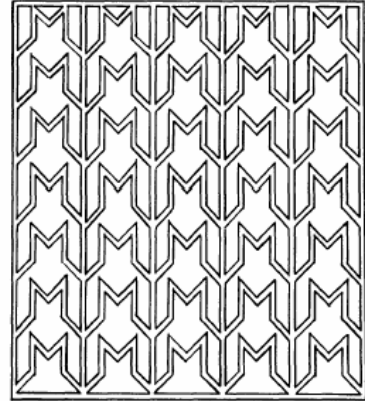


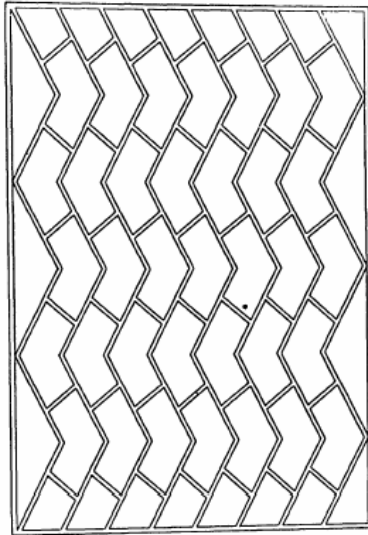
p1



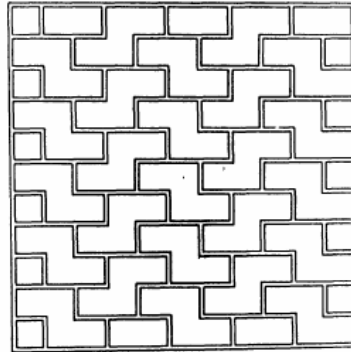
p2



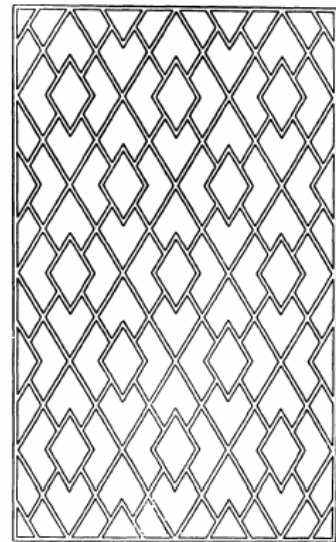
pm



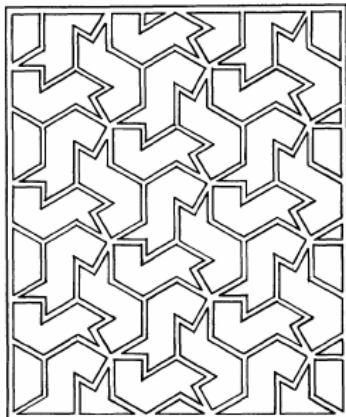
pmg



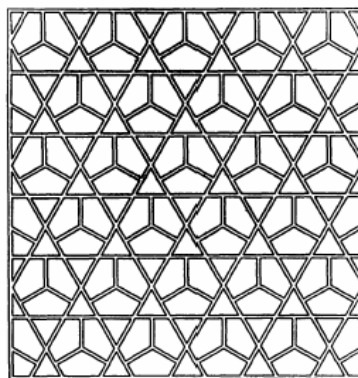
pgg



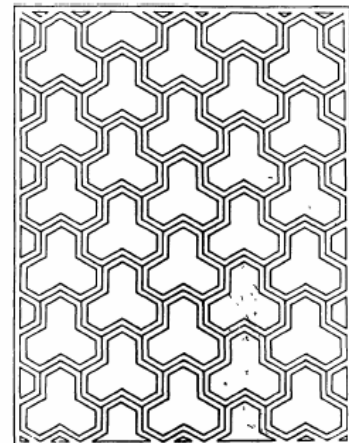
cmm



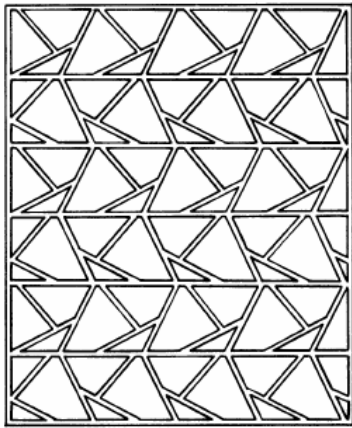
p3



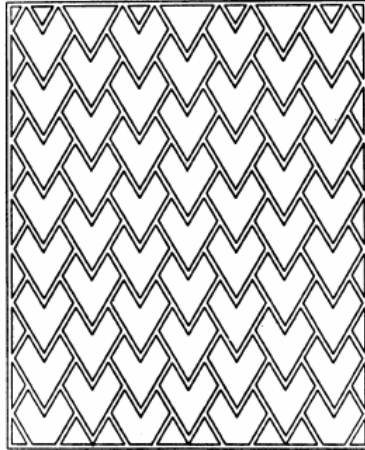
p3m1



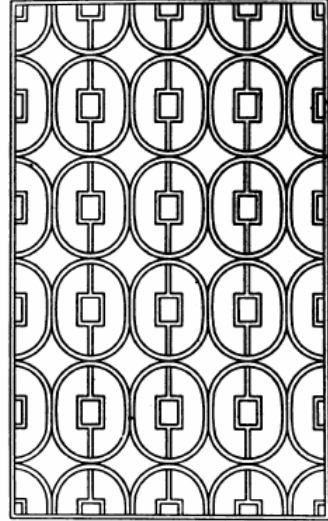
p31m



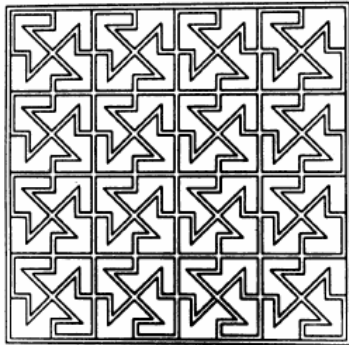
p8



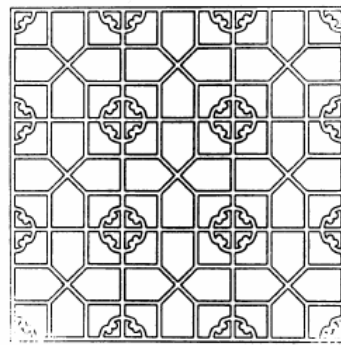
cm



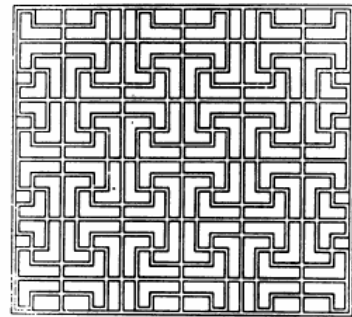
pmm



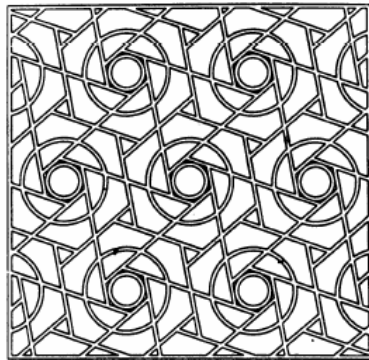
p4



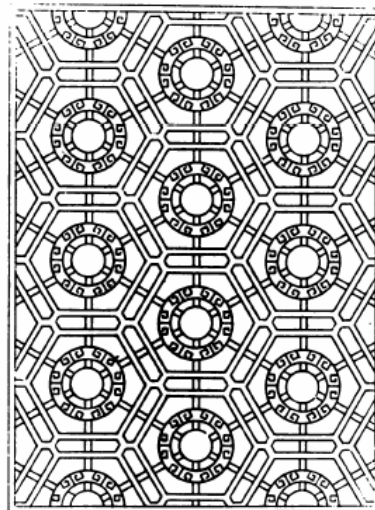
p4m



p4g



p6



p6m

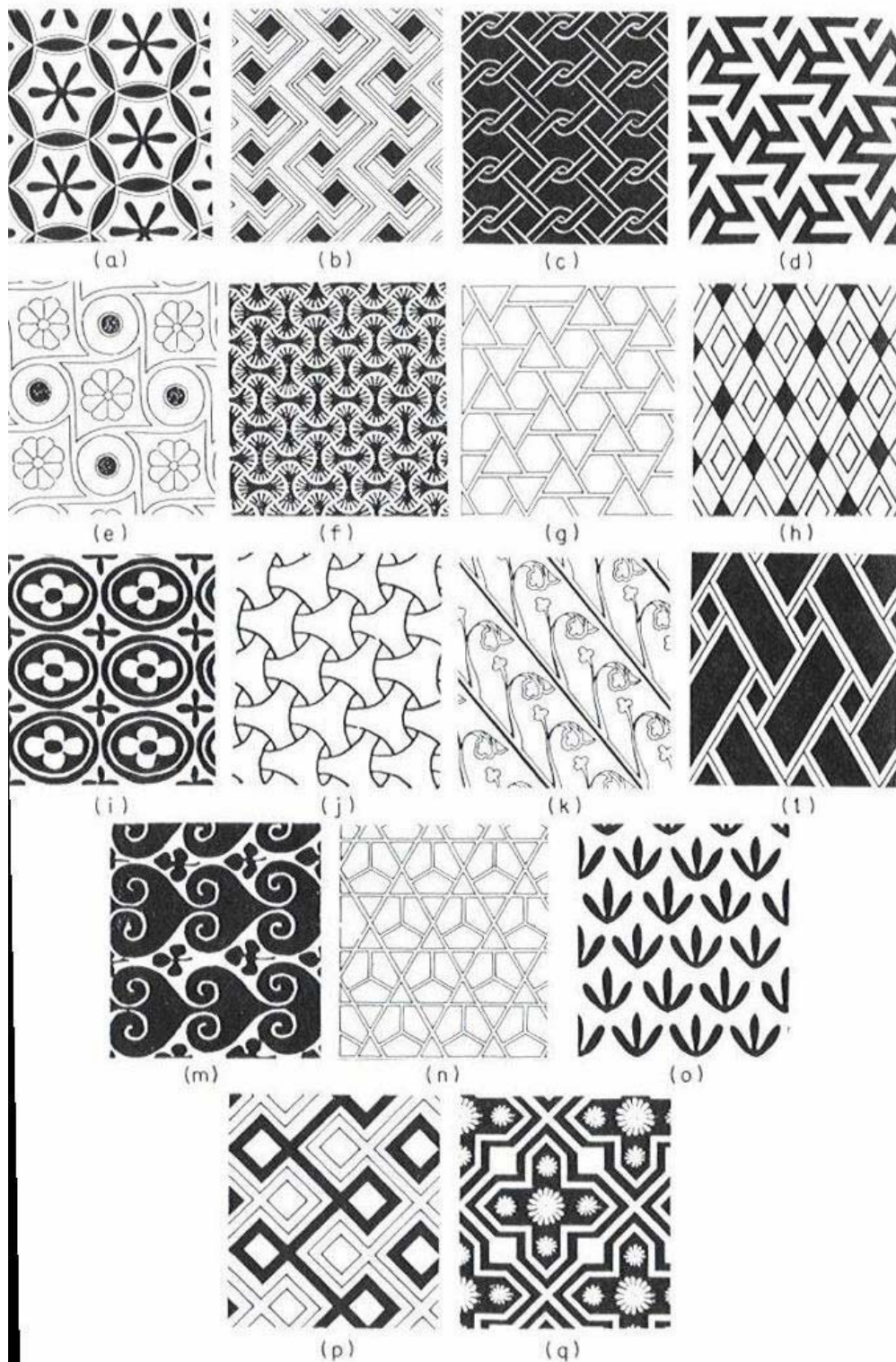


Figure 12.23 Examples of the 17 wallpaper symmetries from different cultures. (a) $p6mm$; (b) pg ; (c) $p2$; (d) $p3$; (e) $p4$; (f) $p4g$; (g) $p6$; (h) $c2mm$; (i) $p2mm$; (j) $p31m$; (k) $p1$; (l) $p2gg$; (m) pm ; (n) $p3m1$; (o) cm ; (p) $p2mg$; (q) $p4mm$.

